

Emma

JANE AUSTEN

A Before Reading

- 1 This book is set in England in the 1800s. It is about 'polite society' and how they lived. What do you think 'polite society' means?

- 2 Look at the pictures on pages 35, 51, and 89.
 - (a) How do the people in the pictures live?

 - (b) Do they have jobs?

 - (c) What do they do for entertainment?

- 3 Below are eight characters from the story. Each of the men marries one of the women. Try and guess who marries whom. Give reasons for your choices.

a tall and very handsome young man ... he has ideas and opinions about everything



not elegant, she is vulgar...not very polite and talks too much ... vain and silly

the kindest man around, a gentleman in every way ... the most important man in Highbury



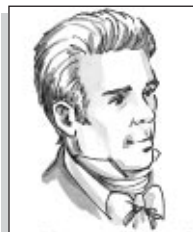
leader of the polite society ... very pretty, clever, rich, charming ... many friends ... loves matchmaking

a very pleasant young man ... very kind ... looks after the farm



very beautiful, very clever ... lovely complexion, charming ... dances beautifully

handsome ... silly young man ... his manners were not those of a real gentleman



seventeen, very pretty, short and plump, not very clever, a simple education, no sense

B While Reading

4 Below is a table. Put a tick in the box if you think the adjective matches the character.

	George Knightly	Emma Woodhouse	Harriet Smith	Frank Churchill	Jane Fairfax	Philip Elton	Augusta Hawkins	Hetty Bates	Robert Martin
Wealthy									
Poor									
Intelligent									
Silly									
Handsome									
Beautiful									
Well mannered									
Vulgar									
Single									
Married in the end									
Popular									
Selfish									
Polite									
Hard working									

Answer the following questions with the right characters. There may be more than one character for each question.

- (a) Who was always trying to match men and women together? _____
- (b) Who was secretly engaged? _____
- (c) Who was rejected by one woman, then married another woman soon after? _____

- (d) Who kept changing their mind about who they loved? _____
- (e) Who kept their true feelings hidden? _____
- (f) Who finally married the person they wanted to in the beginning? _____

C After Reading

- 6 Go back to question 3. How many did you guess correctly? Do you think the couples that married made good choices? Why or why not?
- 7 There were many 'rules' that polite society had to follow. Make a list of some of them. How have things changed in today's society?
- 8 This story talks about customs and rules when a man courts a woman. Are there any customs or rules from your culture about courting?
- 9 On page 106, Frank Churchill writes a letter. In it he describes how Jane wrote him a letter breaking off their engagement. Write this letter from Jane.
- 10 Below is the picture from page 89. Try and guess who each person is. Write what each character is thinking.

